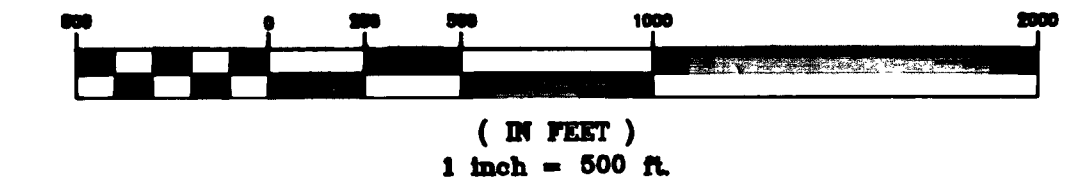


# DECLARATION OF COUNTY LINE COMMON TO BOX ELDER COUNTY AND WEBER COUNTY, UTAH

LOCATED IN SECTIONS 13, 14, 15, 16, T.7N., R.2W.  
AND SECTIONS 4, 7, 8, 9, 18, T.7N., R.1W., S.L.B. & M.  
DECEMBER, 1990  
SHEET 1 OF 2



GRAPHIC SCALE



NARRATIVE

THIS PLAT OF THE WEBER COUNTY, UTAH AND BOX ELDER COUNTY UTAH COMMON BOUNDARY LINE WAS PREPARED TO DETERMINE SAID BOUNDARY LINE LOCATION. BASIS OF BEARING WAS STATE PLANE AS SHOWN ON FILE IN THE WEBER COUNTY SURVEYOR'S OFFICE AS OF DECEMBER 31, 1990.

COUNTY SURVEYOR'S CERTIFICATE

WE THE UNDERSIGNED COUNTY SURVEYORS FOR WEBER COUNTY, UTAH AND BOX ELDER COUNTY, UTAH DO HEREBY CERTIFY THAT THIS PLAT IS A TRUE AND CORRECT REPRESENTATION OF A PORTION OF THE COMMON BOUNDARY LINE BETWEEN SAID COUNTIES AS SURVEYED AND MONUMENTED ON THE GROUND.

*John P. Reeve*  
JOHN P. REEVE  
WEBER COUNTY SURVEYOR

*Denton H. Beecher*  
DENTON H. BEECHER  
BOX ELDER COUNTY SURVEYOR

ACKNOWLEDGEMENT

STATE OF UTAH  
COUNTY OF WEBER

ON THIS 4 DAY OF Jan., 1991, PERSONALLY APPEARED BEFORE ME, THE UNDERSIGNED NOTARY PUBLIC, JOHN P. REEVE, WHO DULY ACKNOWLEDGED TO ME THAT HE IS THE WEBER COUNTY SURVEYOR AND HE SIGNED THE ABOVE COUNTY SURVEYOR'S CERTIFICATE.

Jan 15, 1992  
COMMISSION EXPIRES

*David Hadley*  
NOTARY PUBLIC

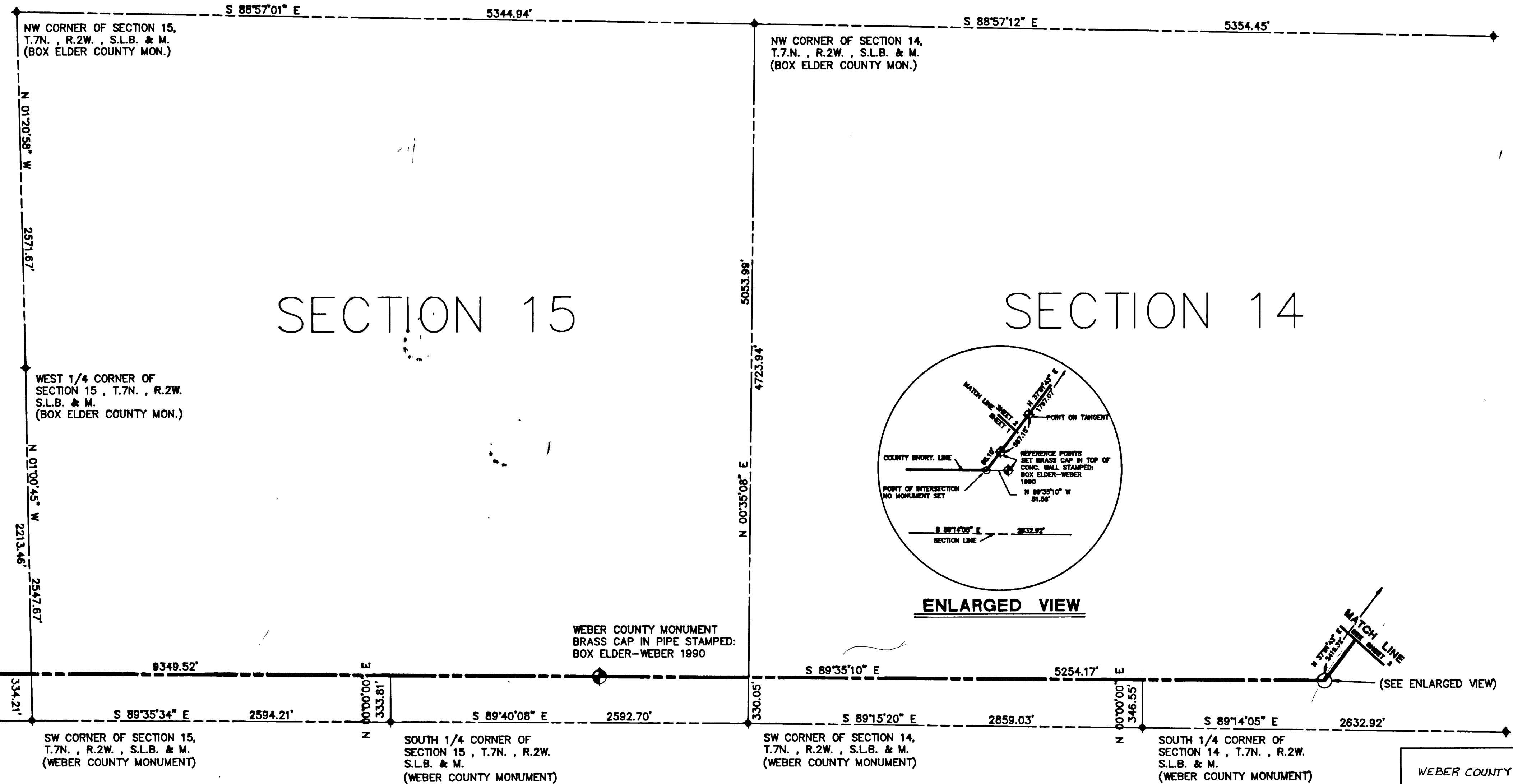
ACKNOWLEDGEMENT

STATE OF UTAH  
COUNTY OF BOX ELDER

ON THIS 2 DAY OF Jan., 1991, PERSONALLY APPEARED BEFORE ME, THE UNDERSIGNED NOTARY PUBLIC, DENTON H. BEECHER, WHO DULY ACKNOWLEDGED TO ME THAT HE IS THE BOX ELDER COUNTY SURVEYOR AND HE SIGNED THE ABOVE COUNTY SURVEYOR'S CERTIFICATE.

11-3-91  
COMMISSION EXPIRES

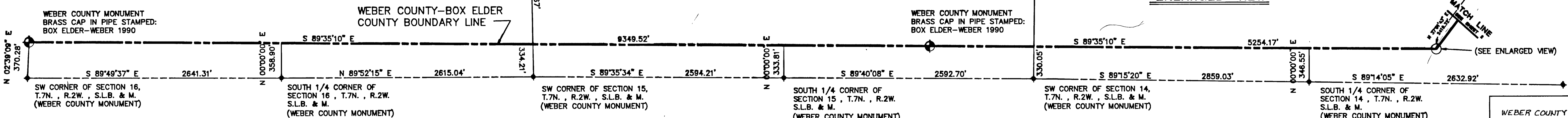
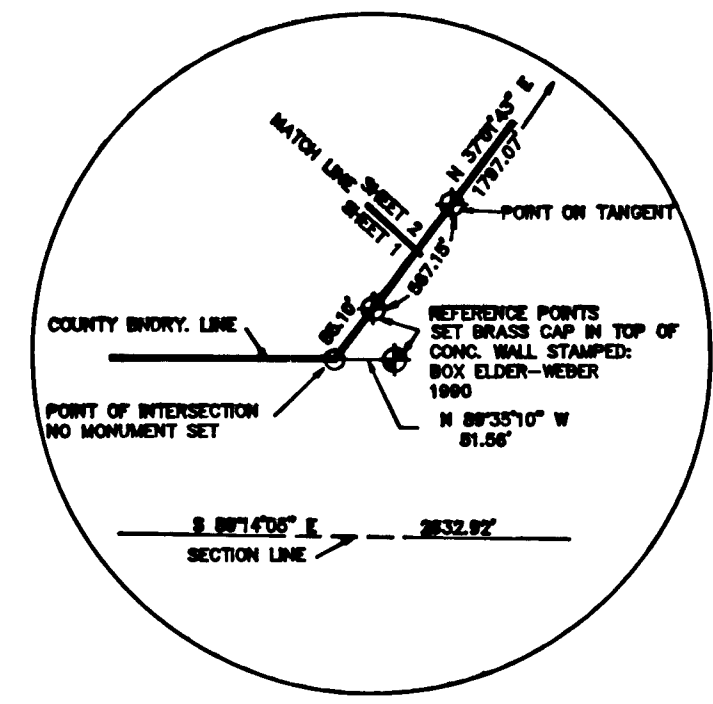
*Sharon O. Davis*  
NOTARY PUBLIC



SECTION 16

SECTION 15

SECTION 14



WEBER COUNTY RECORDER  
ENTRY NO. 1162410 FEE PAID  
NO FEE FILED FOR RECORD AND  
RECORDED MAR. 5, 1992, AT  
9:33AM, IN BOOK 33 OF OFFICIAL  
RECORDS, PAGES 91, 92. RECORDED  
FOR WEBER COUNTY SURVEYOR

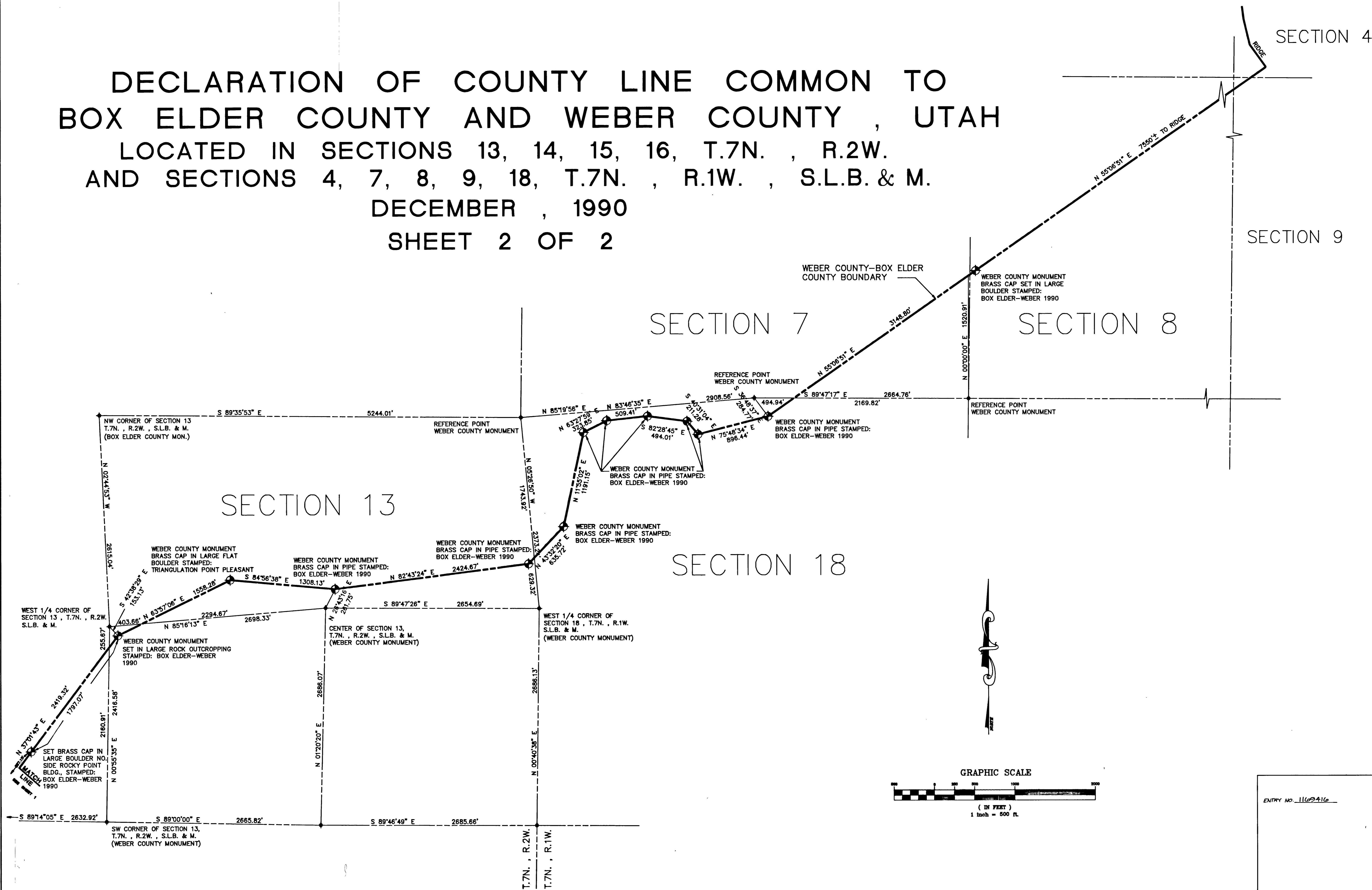
DOUG CROFTS  
WEBER COUNTY RECORDER  
BY: *Gillie Brunke*  
DEPUTY

# DECLARATION OF COUNTY LINE COMMON TO BOX ELDER COUNTY AND WEBER COUNTY, UTAH

LOCATED IN SECTIONS 13, 14, 15, 16, T.7N., R.2W.  
AND SECTIONS 4, 7, 8, 9, 18, T.7N., R.1W., S.L.B. & M.

DECEMBER, 1990

SHEET 2 OF 2



ENTRY NO. 1162416